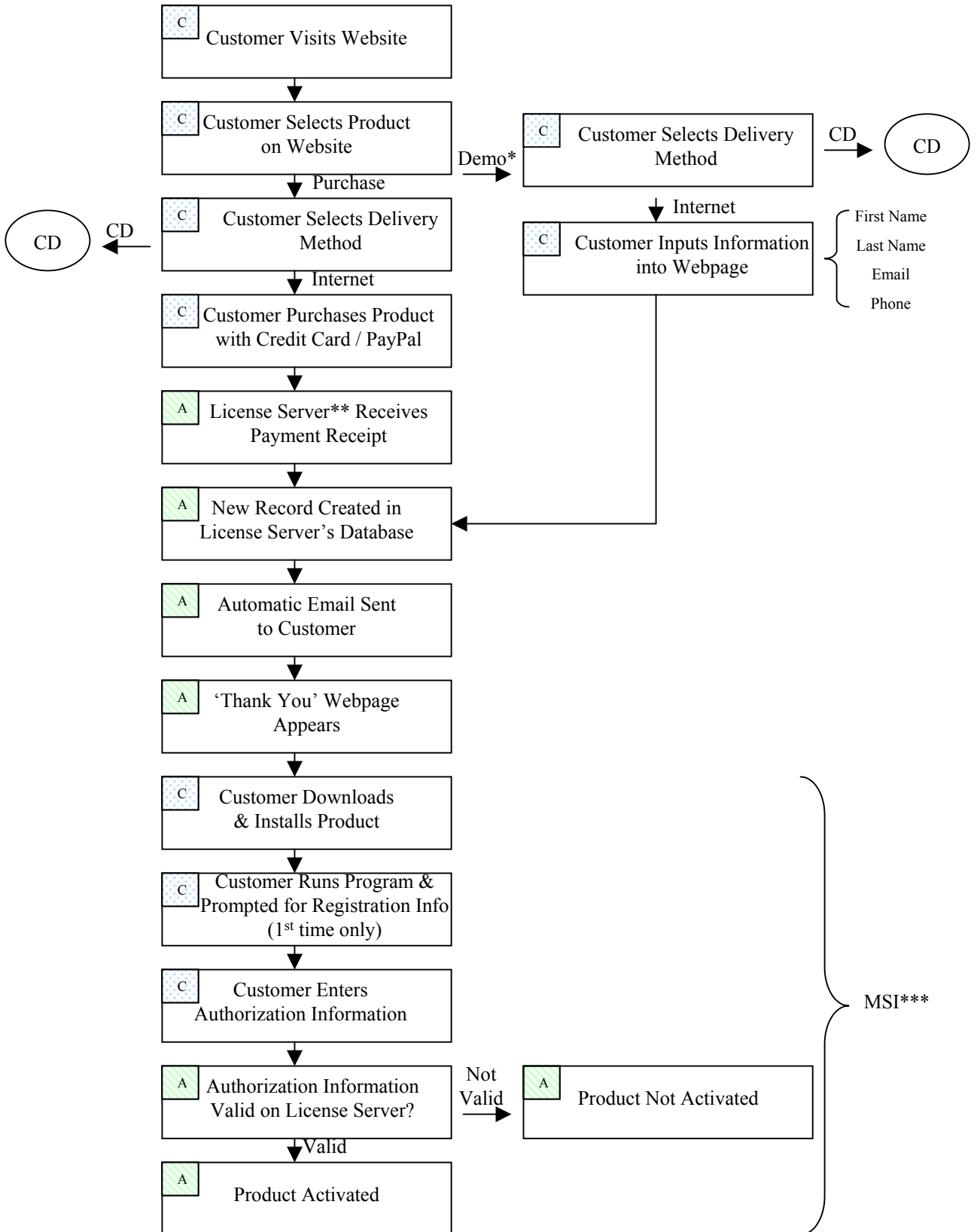


ASPLock Flow for E-Commerce Transactions

Please Note: Demo process is Not identical to the Purchase process.



Notes:

* Demo users may be prompted to purchase product every time program is executed.

** License Server may be hosted by SSK or maintained on client infrastructure.

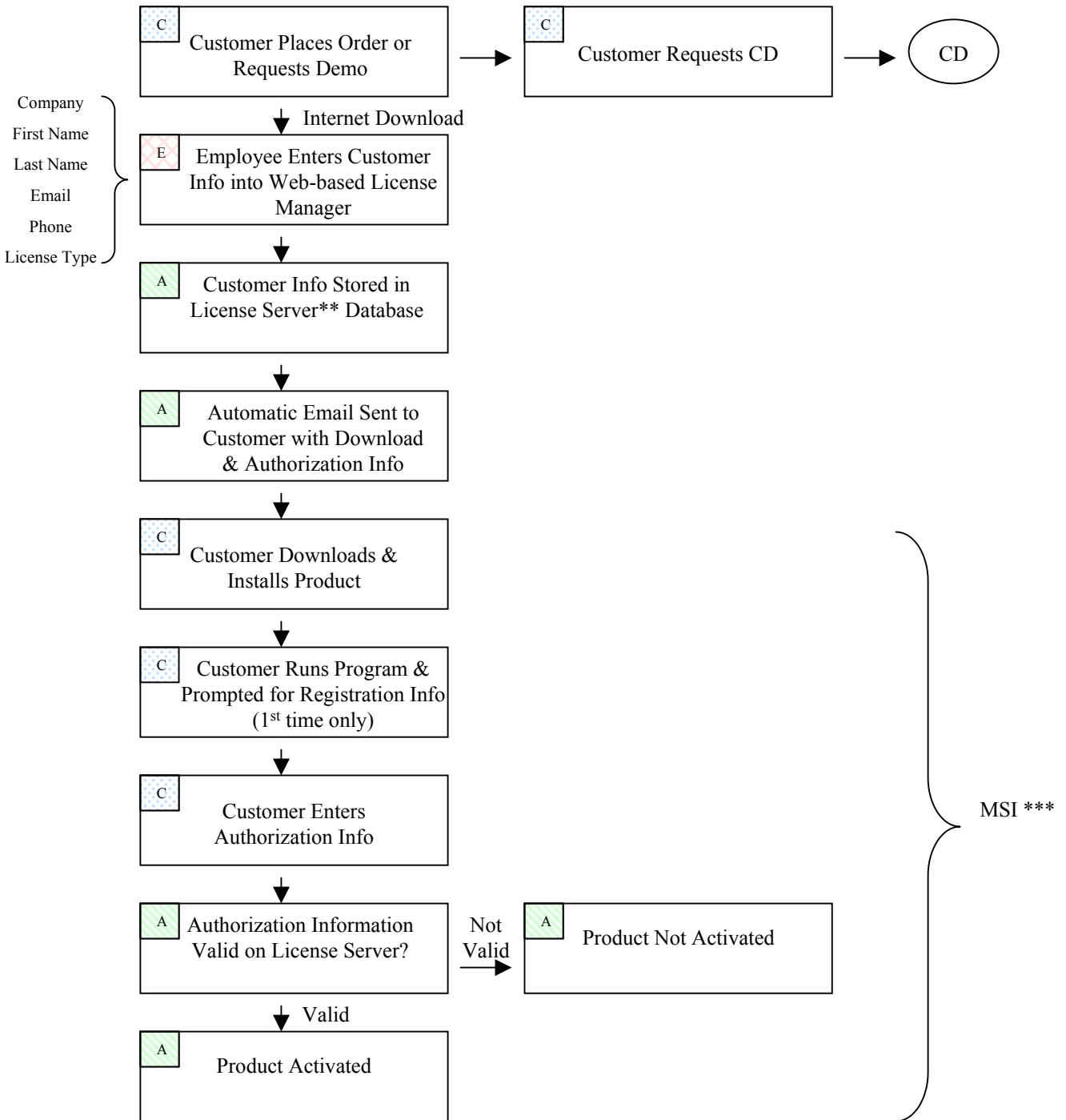
*** MSI Installation available for deployment by Administrator.

Legend:

- C Customer Action Required
- A Automatic Step
- E Employee Action Required

ASPLock Flow for Direct / Reseller / OEM* Transactions

Please Note: Demo process is identical to the Purchase process.



Notes:

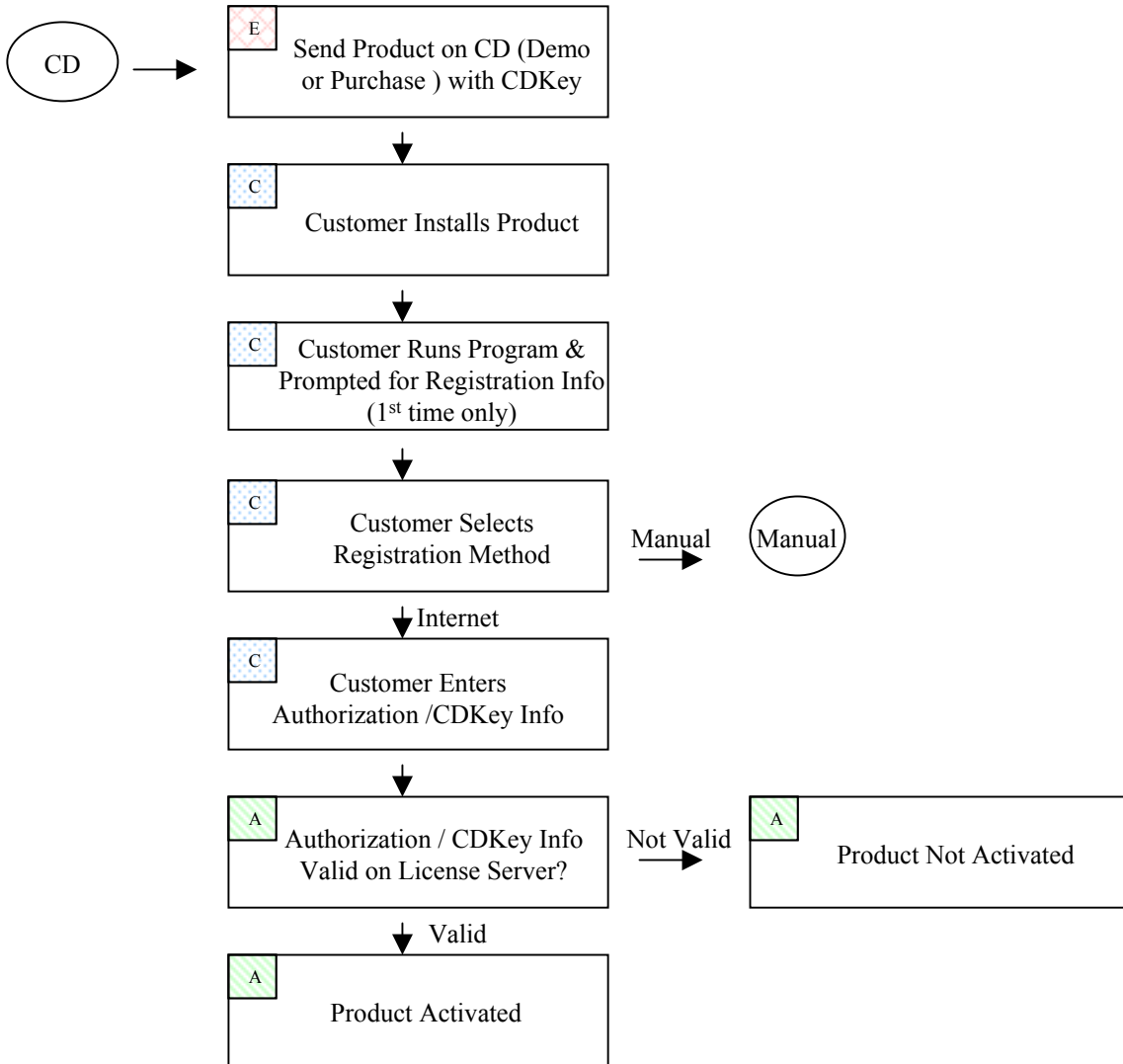
- * OEM versions can include a 'no contact registration' option for demos.
- ** License Server may be hosted by SSK or maintained on client infrastructure.
- *** MSI Installation available for deployment by Administrator.

Legend:

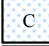
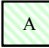
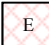
- Customer Action Required
- Automatic Step
- Employee Action Required

ASPLock Flow for CD Distribution

Please Note: Demo process is identical to the Purchase process.

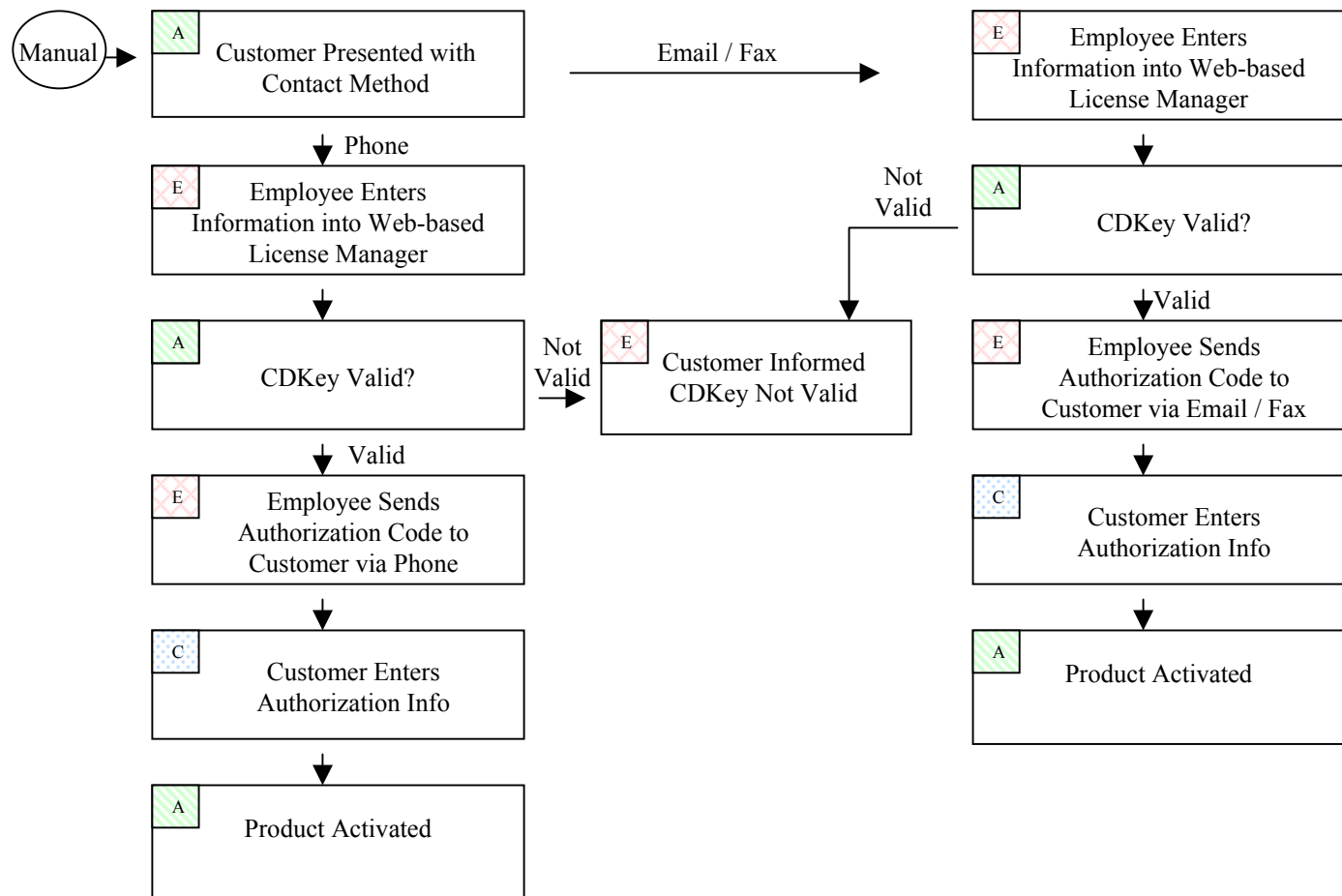


Legend:

-  Customer Action Required
-  Automatic Step
-  Employee Action Required

ASPLock Flow for CD Distribution – Manual Registration

Please Note: Demo process is identical to the Purchase process.



Legend:

- C Customer Action Required
- A Automatic Step
- E Employee Action Required